

CAT. B

KING "KT"

Altezza | Height | Hauteur: H 140 cm  
Peso | Weight | Poids: 260 gr/m<sup>2</sup>

I = CL1

D = B1

F = M1

GB = CRIB 5 | BS 7176 Medium Hazard

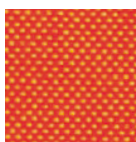
100% PES TREVIRA CS



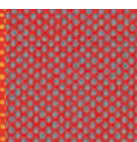
Martindale: 70.000 cicli/turns/cycles  
Pilling: 5



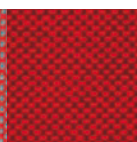
KT 01



KT 12



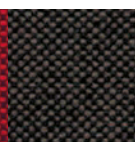
KT 06



KT 04



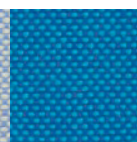
KT 16



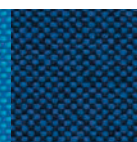
KT 92



KT 61



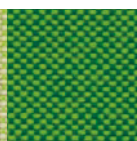
KT 66



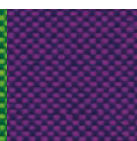
KT 96



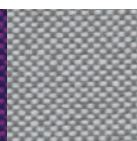
KT 71



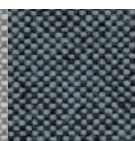
KT 70



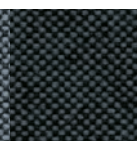
KT 55



KT 81



KT 88



KT 98

IN COLLABORAZIONE CON

**Gabriel**<sup>®</sup>

GPL

CAPTURE "CA"

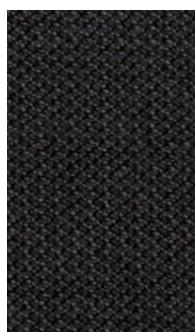
Altezza | Height | Hauteur: H 140 cm  
Peso | Weight | Poids: 340 gr/m<sup>2</sup>

EN 1021/1-2 (flame and cigarette tests)

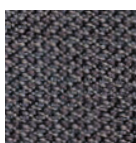
85% WO NZL - 15% PA



Martindale: 200.000 cicli/turns/cycles  
Pilling: 4 | 5



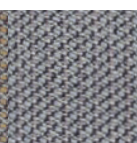
CA 551



CA 421



CA 513



CA 413

DesignCollection:  
JADA

IN COLLABORAZIONE CON

**Gabriel**<sup>®</sup>

GPL

MOOD "OD"

92% WO - 8% PA



OD 14



OD 104



OD 10



OD 11

Altezza | Height | Hauteur: H 140 cm  
Peso | Weight | Poids: 400 gr/m<sup>2</sup>  
Martindale: 95.000 cicli/turns/cycles  
Pilling: 4 | 5

EN 1021/1-2 (flame and cigarette tests)

CAT. D

LANEE "LM"

100% WO



LM 13

Altezza | Height | Hauteur: H 140 cm  
Peso | Weight | Poids: 410 gr/m<sup>2</sup>  
Martindale: 50.000 cicli/turns/cycles

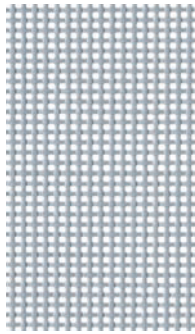
EN 1021/1-2 (flame and cigarette tests)

RETE  
MESH  
RÉSILLE

RETI

DESIGN "S"

100% PES/PVC COMPOSITO



S 03

Altezza | Height | Hauteur: **H 150 cm**  
Peso | Weight | Poids: **600 gr/m<sup>2</sup>**  
Martindale: **150.000 cicli/turns/cycles**

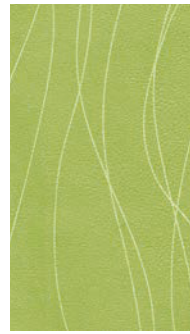
DesignCollection:  
SAX Rete | SAX Rete White

FINTA PELLE  
IMITATION LEATHER  
SIMILI CUIR

CAT. C

SKAI FLO "SF"

69% PVC - 1% PU - 10% CO - 20% PES



SF 17

Altezza | Height | Hauteur: **H 140 cm**  
Peso | Weight | Poids: **520 gr/m<sup>2</sup>**  
Martindale: **50.000 cicli/turns/cycles**

I = 1/IM

Consigliato per | Suggested for | Coinseillé pour  
DesignCollection:  
BLOG schienale | backrest | dossier

**DISPONIBILI FINO ESAURIMENTO SCORTE**  
**AVAILABLE UNTIL SEEL OUT**  
**DISPONIBLE JUSQU'À ÉPUISEMENT DES STOCKS**

FINTA PELLE  
IMITATION LEATHER  
SIMILI CUIR

CAT. B

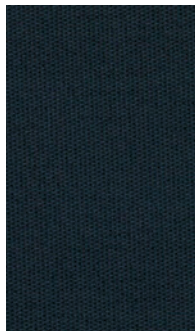
LEDER TEC "LT"

99% PVC - 1% PU

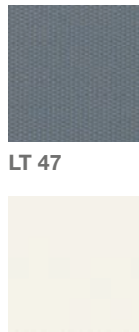


Altezza | Height | Hauteur: **H 140 cm**  
Peso | Weight | Poids: **700 gr/m<sup>2</sup>**  
Martindale: **100.000 cicli/turns/cycles**

I = 1/IM



LT 01



LT 79



LT 84



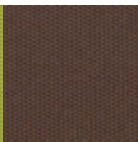
LT 65



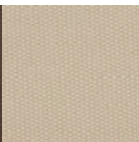
LT 60



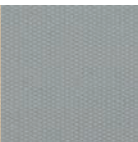
LT 49



LT 83



LT 09



LT 81

VERA PELLE  
REAL LEATHER  
CUIR VÉRITABLE



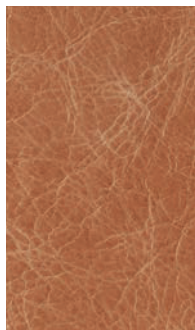
La pelle è un prodotto naturale, soggetto a leggere variazioni di struttura e colore. Eventuali piccoli segni o cicatrici confermano l'originalità del prodotto.  
Leather is a natural product, it may therefore vary in colour and structure. Possible natural marks or scars confirm that leather is pure.  
Le cuir est un produit naturel, sujet à de légères variations de structure et de couleur. La présence éventuelle de petites marques ou cicatrices confirmeront l'originalité du produit.

LUX

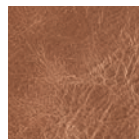
TUSCANIA "TU"

Taglia | Size | Taille: **4,8 - 5 m<sup>2</sup>**  
Spessore | Thickness | Epaisseur: **0,8 - 1 mm**

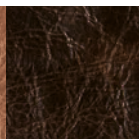
Vera pelle vintage | Real vintage leather | Vrai cuir vintage



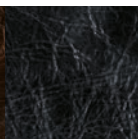
TU 22



TU 21



TU 24



TU 27

**FINTA PELLE  
IMITATION LEATHER  
SIMILI CUIR**

**CAT. B**

**LEDER VEGA "LV"**

Altezza | Height | Hauteur: H 140 cm  
Peso | Weight | Poids: 700 gr/m<sup>2</sup>

I = 1/IM

D = B2

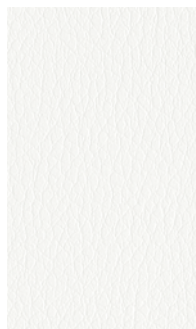
F = M2

EN 1021/1-2 (flame and cigarette tests)

90% PVC - 10% PA finta pelle | imitation leather | simili cuir



Martindale: 80.000 cicli/turns/cycles



LV 06



LV 55

LV 64

LV 68

LV 69

LV 73

LV 86

LV 88

LV 41



LV 42

LV 40

LV 46

LV 49

LV 18

LV 31

LV 62

LV 91

**CAT. B**

**LEDER "LE"**

Altezza | Height | Hauteur: H 140 cm  
Peso | Weight | Poids: 640 gr/m<sup>2</sup>

I = 1/IM

F = M2

EN 1021/1-2 (flame and cigarette tests)

87% PVC - 13% PA finta pelle | imitation leather | simili cuir



Martindale: 50.000 cicli/turns/cycles



LE 06



LE 30

LE 71

LE 92

LE 68

LE 26

LE 97

LE 27

LE 18



LE 39

LE 99

**CAT. C**

**SKAI FLO "SF"**

Altezza | Height | Hauteur: H 140 cm  
Peso | Weight | Poids: 520 gr/m<sup>2</sup>

I = 1/IM

EN 1021/1-2 (flame and cigarette tests)

69% PVC - 1% PU - 10% COT - 20% PES



Martindale: 50.000 cicli/turns/cycles



SF 16



SF 56

SF 12

SF 13

SF 60

SF 23

SF 17

Consigliato per | Suggested for | Coinseillé pour  
DesignCollection: BLOG schienale | backrest | dossier

**DISPONIBILI FINO ESAURIMENTO SCORTE  
AVAILABLE UNTIL SEEL OUT  
DISPONIBLE JUSQU'À ÉPUISEMENT DES STOCKS**

**FINTA PELLE  
IMITATION LEATHER  
SIMILI CUIR**

**CAT. C**

**PAROTEGA "PT"**

Altezza | Height | Hauteur: **H 140 cm**  
Peso | Weight | Poids: **700 gr/m<sup>2</sup>**

I = 1/IM  
D = B1  
F = M1  
GB = CRIB 5  
EN 1021/1-2 (flame and cigarette tests)

84% PVC - 16% CO finta pelle | imitation leather | simili cuir



Martindale dry (EN ISO 5470-2):  
**75.000 cicli/turns/cycles**



**PT 52**



**PT 61 PT 58 PT 06 PT 66 PT 07 PT 65 PT 54 PT 55**



**PT 56 PT 09 PT 10 PT 57 PT 05 PT 04 PT 59**

Resistente all'abrasione | Stabile all'urina e al sangue | Stabile ai disinfettanti  
Abrasion resistant | Urine and blood resistant | Resistant to disinfectants  
Résistant à l'abrasion | Résistant à l'urine et au sang | Résistant aux désinfectants

**CAT. C**

**SKAI PARADINO "SK"**

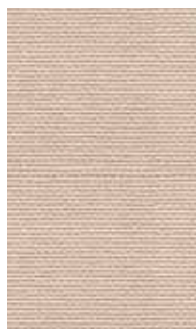
Altezza | Height | Hauteur: **H 140 cm**  
Peso | Weight | Poids: **670 gr/m<sup>2</sup>**

I = 1/IM  
D = B2  
F = M2  
GB = CRIB 5  
EN 1021/1-2 (flame and cigarette tests)

90% PVC - 10% CO/PES finta pelle | imitation leather | simili cuir



Martindale dry (EN ISO 5470-2):  
**50.000 cicli/turns/cycles**



**SK 35**



**SK 49 SK 28 SK 32 SK 33 SK 36 SK 27**

Resistente all'abrasione | Stabile all'urina e al sangue | Stabile ai disinfettanti  
Abrasion resistant | Urine and blood resistant | Resistant to disinfectants  
Résistant à l'abrasion | Résistant à l'urine et au sang | Résistant aux désinfectants

**RIVESTIMENTI FUORI PRODUZIONE  
OUT OF STOCK COVERINGS  
REVÊTEMENTS HORS PRODUCTION**

**CAT. D**

**COUNTRY "CY"**

Altezza | Height | Hauteur: **H 140 cm**  
Peso | Weight | Poids: **810 gr/m<sup>2</sup>**

D = B2  
F = M2  
EN 1021/1-2 (flame and cigarette tests)

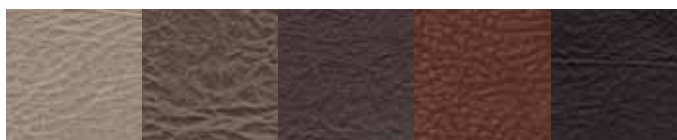
89% PVC - 11% CO/PES finta pelle | imitation leather | simili cuir



Martindale dry (EN ISO 5470-2):  
**30.000 cicli/turns/cycles**



**CY 80**



**CY 82 CY 83 CY 84 CY 87 CY 90**



**VERA PELLE  
REAL LEATHER  
CUIR VERITABLE**



La pelle è un prodotto naturale, soggetto a leggere variazioni di struttura e colore. Eventuali piccoli segni o cicatrici confermano l'originalità del prodotto.  
Leather is a natural product, it may therefore vary in colour and structure. Possible natural marks or scars confirm that leather is pure.  
Le cuir est un produit naturel, sujet à de légères variations de structure et de couleur. La présence éventuelle de petites marques ou cicatrices confirment l'originalité du produit.

**CAT. GPL** | **GPL "GPL"**

Taglia | Size | Taille: **3,8 - 4 m<sup>2</sup>**  
Spessore | Thickness | Epaisseur:  
**0,8 - 1 mm**

VERA PELLE | REAL LEATHER | CUIR VERITABLE



**CAT. E** | **PANAMA "PA"**

Taglia | Size | Taille: **4 - 4,5 m<sup>2</sup>**  
Spessore | Thickness | Epaisseur:  
**1 - 1,2 mm**

VERA PELLE | REAL LEATHER | CUIR VERITABLE



**CAT. LUX** | **FLORIDA "F"**

Taglia | Size | Taille: **5 m<sup>2</sup>**  
Spessore | Thickness | Epaisseur:  
**1,2 - 1,4 mm**

VERA PELLE | REAL LEATHER | CUIR VERITABLE



**RETE  
MESH  
RÉSILLE**

**RETI**

**DESIGN "N"**

Altezza | Height | Hauteur: **H 150 cm**  
 Peso | Weight | Poids: **330 gr/m<sup>2</sup>**  
 Martindale: **100.000 cicli/turns/cycles**

I = CL1  
 GB = BS:7176  
 EN 1021/1-2 (flame and cigarette tests)

100% PES



**N 06**



**N 11      N 13      N 12      N 14      N 16      N 01**

Rete | Mesh | Résille  
 DesignCollection: Win | Q-44 | Q-Go | Q-Easy | Q-Four

**RETI**

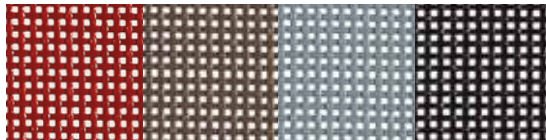
**DESIGN "S"**

Altezza | Height | Hauteur: **H 150 cm**  
 Peso | Weight | Poids: **600 gr/m<sup>2</sup>**  
 Martindale: **150.000 cicli/turns/cycles**

PES/PVC COMPOSITO



**S 51**



**S 70      S 15      S 82 \*      S 10**

Rete | Mesh | Résille  
 DesignCollection: Sax Rete | Sax Rete White

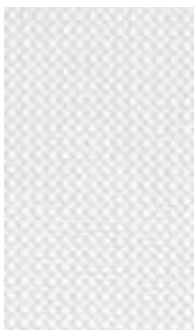
**\* RIVESTIMENTI FUORI PRODUZIONE  
 OUT OF STOCK COVERINGS  
 REVÊTEMENTS HORS PRODUCTION**

**RIVESTIMENTI FUORI PRODUZIONE  
 OUT OF STOCK COVERINGS  
 REVÊTEMENTS HORS PRODUCTION**

**RETI**

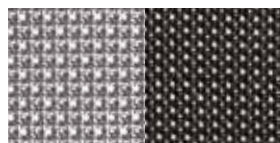
**UNI "B"**

100% PES



**B 02/BI**

Altezza | Height | Hauteur: **H 120 cm**  
 Peso | Weight | Poids: **500 gr/m<sup>2</sup>**  
 Martindale: **25.000 cicli/turns/cycles**



**B 03/GR      B 01/N**

Rete | Mesh | Résille  
 UniCollection: Corolla Rete | CO2 Rete  
 Hola Rete | 180 Rete

**RETI**

**UNI "J"**

70% PVC - 30% PES



**J 02**

Altezza | Height | Hauteur: **H 140 cm**  
 Peso | Weight | Poids: **565 gr/m<sup>2</sup>**  
 Martindale: **100.000 cicli/turns/cycles**  
 EN 1021/1-2 (flame and cigarette tests)



**J 01**

Rete | Mesh | Résille  
 UniCollection: Jolly | JX

IN COLLABORAZIONE CON

**Gabriel®**

**CAT. C** ATLANTIC "AT"

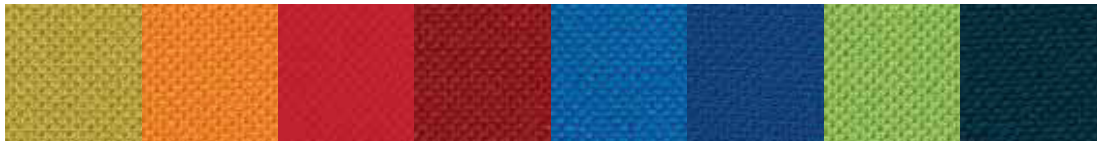
Altezza | Height | Hauteur: H 150 cm  
Peso | Weight | Poids: 350 gr/m<sup>2</sup>  
Martindale: 110.000 cicli/turns/cycles  
Pilling: 4 | 5

F = M3 | AM 18  
EN 1021/1-2 (flame and cigarette tests)

100% PES TREVIRA CS



AT 78



AT 48

AT 55

AT 93

AT 15

AT 25

AT 62

AT 99

AT 43



AT 41

AT 11

AT 65

AT 69

**CAT. D** STEP "ST"

Altezza | Height | Hauteur: H 140 cm  
Peso | Weight | Poids: 335 gr/m<sup>2</sup>  
Martindale: 100.000 cicli/turns/cycles  
Pilling: 4 | 5

D = B1  
F = M1 | AM 18  
GB = CRIB 5 | BS 7176 Medium Hazard  
EN 1021/1-2 (flame and cigarette tests)

100% PES TREVIRA CS



ST 73



ST 82

ST 13

ST 23

ST 50

ST 62

ST 99

**CAT. D** STEP MELANGE "SM"

Altezza | Height | Hauteur: H 140 cm  
Peso | Weight | Poids: 335 gr/m<sup>2</sup>  
Martindale: 100.000 cicli/turns/cycles  
Pilling: 4 | 5

D = B1  
F = M1 | AM 18  
GB = CRIB 5 | BS 7176 Medium Hazard  
EN 1021/1-2 (flame and cigarette tests)

100% PES TREVIRA CS



SM 57



SM 79

SM 92

SM 20

SM 04

SM 19

IN COLLABORAZIONE CON

**Gabriel**<sup>®</sup>

**CAT. D**    **CRISP "CR"**

93% WO - 7% PA



Altezza | Height | Hauteur: H 140 cm  
Peso | Weight | Poids: 335 gr/m<sup>2</sup>  
Martindale: 200.000 cicli/turns/cycles  
Pilling: 4 | 5

EN 1021/1-2 (flame and cigarette tests)



**GPL**    **MOOD "OD"**

92% WO - 8% PA



Altezza | Height | Hauteur: H 140 cm  
Peso | Weight | Poids: 400 gr/m<sup>2</sup>  
Martindale: 95.000 cicli/turns/cycles  
Pilling: 4 | 5

EN 1021/1-2 (flame and cigarette tests)



**LUX**    **COMFORT "CF"**

88% PES - 12% PU



Altezza | Height | Hauteur: H 140 cm  
Peso | Weight | Poids: 275 gr/m<sup>2</sup>  
Martindale: 150.000 cicli/turns/cycles  
Pilling: 5

F = M3  
EN 1021/1-2 (flame and cigarette tests)





**CAT. A**      **RADIO "RA"**

100% PES FR



Altezza | Height | Hauteur: H 140 cm  
 Peso | Weight | Poids: 400 gr/m<sup>2</sup>

Martindale: 80.000 cicli/turns/cycles  
 Pilling: 5

I = CL1 | 1/IM

D = B1

F = M1 | AM 18

GB = CRIB 5 | BS 7176 Medium Hazard  
 EN 1021/1-2 (flame and cigarette tests)



RA 08



RA 82

RA 28

RA 17

RA 36

RA 71

RA 98

RA 25

RA 70



RA 32

RA 80

RA 33

**CAT. B**      **KING L "KL"**

100% PES TREVIRA CS



Altezza | Height | Hauteur: H 140 cm  
 Peso | Weight | Poids: 260 gr/m<sup>2</sup>

Martindale: 60.000 cicli/turns/cycles  
 Pilling: 5

I = CL1 | 1/IM

D = B1

F = M1 | AM 18

GB = CRIB 5 | BS 7176 Medium Hazard  
 EN 1021/1-2 (flame and cigarette tests)



KL 03



KL 30

KL 27

KL 17

KL 36

KL 50

KL 54

KL 47

KL 70



KL 80

KL 26

KL 41

KL 79

KL 08

KL 01

KL 33

**CAT. B**      **KING L "KL"**

100% PES TREVIRA CS



Altezza | Height | Hauteur: H 140 cm  
 Peso | Weight | Poids: 260 gr/m<sup>2</sup>

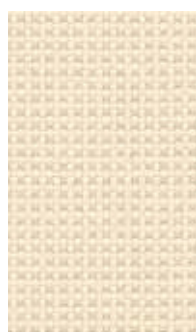
Martindale: 60.000 cicli/turns/cycles  
 Pilling: 5

I = CL1 | 1/IM

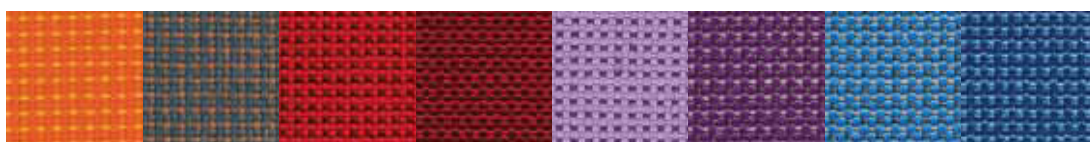
D = B1

F = M1 | AM 18

GB = CRIB 5 | BS 7176 Medium Hazard  
 EN 1021/1-2 (flame and cigarette tests)



KL 15



KL 53

KL 85

KL 28

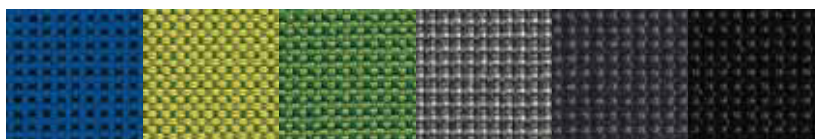
KL 51

KL 95 \*

KL 06

KL 57

KL 16



KL 72

KL 04

KL 19

KL 07

KL 10

KL 34

**RIVESTIMENTI FUORI PRODUZIONE**  
**\* OUT OF STOCK COVERINGS**  
**REVÊTEMENTS HORS PRODUCTION**

**CAT. B** **KING FLEX "KF"**

100% PES TREVIRA CS



Altezza | Height | Hauteur: H 140 cm  
 Peso | Weight | Poids: 400 gr/m<sup>2</sup>  
 Martindale: 100.000 cicli/turns/cycles  
 Pilling: 5

I = CL1 | 1/IM  
 D = B1  
 F = M1 | AM 18  
 GB = CRIB 5 | BS 7176 Medium Hazard  
 EN 1021/1-2 (flame and cigarette tests)



**CAT. C** **KING K "KK"**

100% PES TREVIRA CS



Altezza | Height | Hauteur: H 140 cm  
 Peso | Weight | Poids: 280 gr/m<sup>2</sup>  
 Martindale: 80.000 cicli/turns/cycles  
 Pilling: 5

I = CL1 | 1/IM  
 D = B1  
 F = M1 | AM 18  
 GB = CRIB 5 | BS 7176 Medium Hazard  
 EN 1021/1-2 (flame and cigarette tests)



**CAT. C** **XTREME PLUS "X"**

100% PES



Altezza | Height | Hauteur: H 140 cm  
 Peso | Weight | Poids: 310 gr/m<sup>2</sup>  
 Martindale: 100.000 cicli/turns/cycles  
 Pilling: 5

I = CL1  
 D = B1  
 F = M1  
 GB = BS 7176 Medium Hazard  
 EN 1021/1-2 (flame and cigarette tests)



**CAT. C****LASER LY "LY"**

Altezza | Height | Hauteur: H 140 cm  
 Peso | Weight | Poids: 420 gr/m<sup>2</sup>

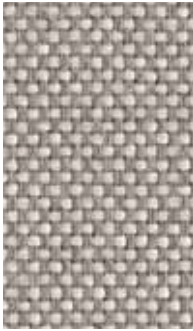
I = CL1 | 1/IM  
 D = B1

100% PES TREVIRA CS

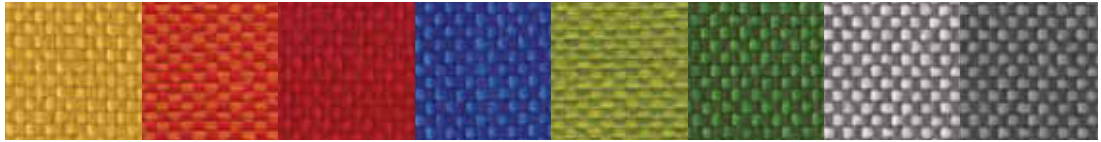


Martindale: 100.000 cicli/turns/cycles  
 Pilling: 5

F = M1 | AM 18  
 GB = CRIB 5 | BS 7176 Medium Hazard  
 EN 1021/1-2 (flame and cigarette tests)



LY 11



LY 09

LY 94

LY 05

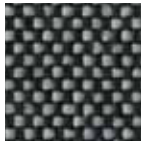
LY 96

LY 02

LY 04

LY 07

LY 98



LY 03

**CAT. D****LASER J "LJ"**

Altezza | Height | Hauteur: H 140 cm  
 Peso | Weight | Poids: 525 gr/m<sup>2</sup>

I = CL1 | 1/IM  
 D = B1

100% PES TREVIRA CS

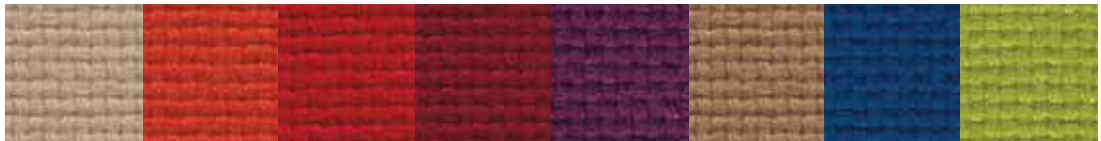


Martindale: 100.000 cicli/turns/cycles  
 Pilling: 5

F = M1 | AM 18  
 GB = CRIB 5 | BS 7176 Medium Hazard  
 EN 1021/1-2 (flame and cigarette tests)



LJ 49



LJ 06

LJ 12

LJ 21

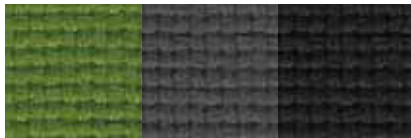
LJ 11

LJ 03

LJ 48

LJ 98

LJ 25



LJ 71

LJ 17

LJ 33

**CAT. D****ARCHITECTURE "AK"**

Altezza | Height | Hauteur: H 140 cm  
 Peso | Weight | Poids: 430 gr/m<sup>2</sup>

I = CL1

100% PES



Martindale: 35.000 cicli/turns/cycles

EN 1021/1-2 (flame and cigarette tests)



AK 84



AK 18

AK 68

AK 78

AK 13

AK 48

AK 16

Consigliato per | Suggested for | Coinseillé pour  
 DesignCollection: BLOG sedile e cuscini sagomati oppure morbidi  
 seat and soft or shaped cushions | assise et coussins souples ou courbés.



**CAT. D** LANEÉ "LU"

Altezza | Height | Hauteur: H 140 cm  
Peso | Weight | Poids: 410 gr/m<sup>2</sup>

EN 1021/1-2 (flame and cigarette tests)

100% WO



Martindale: 50.000 cicli/turns/cycles



LU 10



LU 07 LU 06 LU 01 LU 04 LU 03 LU 11 LU 02 LU 09

**CAT. D** LANEÉ "LM"

Altezza | Height | Hauteur: H 140 cm  
Peso | Weight | Poids: 410 gr/m<sup>2</sup>

EN 1021/1-2 (flame and cigarette tests)

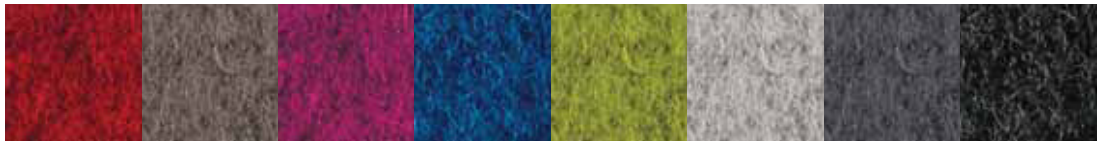
100% WO



Martindale: 50.000 cicli/turns/cycles



LM 06



LM 11 LM 03 LM 04 LM 08 LM 05 LM 01 LM 02 LM 12

**FELTRO**

Altezza | Height | Hauteur: H 150 cm  
Peso | Weight | Poids: 550 gr/m<sup>2</sup>

EN 1021/1-2 (flame and cigarette tests)

90% WO - 10% PES



Martindale: 40.000 cicli/turns/cycles  
Spessore | Thickness | Epaisseur: 4 - 4,5 mm



502



201 603 604

Feltro | Woolfelt | Feutre  
DesignCollection: Pareti Andrew | Andrew screens | Cloisons Andrew